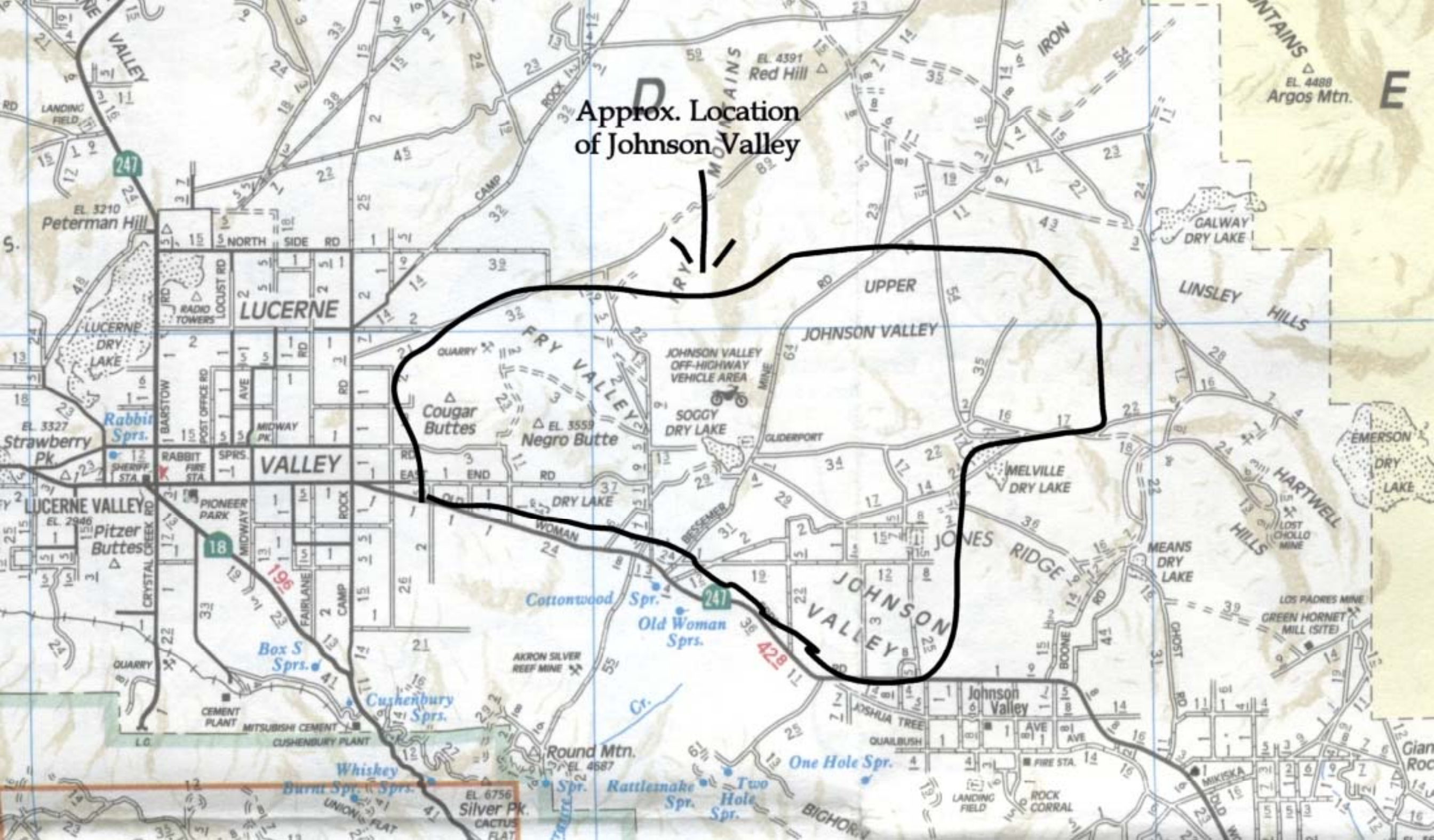


Approx. Location
of Johnson Valley



DIRECTIONS TO JOHNSON VALLEY LOCATIONS

From L.A.: Take the 10 Fwy. East to the 15 Fwy. North to the 18 East (South)

To Rabbit Dry Lake: Turn left on Rabbit Springs Rd.

To Lucerne Dry Lake: Turn left (North) on Hwy. 247/Barstow Rd. Dry lake is in the private area on the East side of 247.

To Soggy Dry Lake & Anderson Dry Lake:

Go straight on 18 (towards Big Bear) to 247 Fwy. (stop sign), go East; at Bessemer Mine Road (dirt road), go North (Road is across the street from a large, white rock on the South side of the 247); both dry lakes will be on the West side of the road.

To Cougar Buttes:

Go straight on 18 (towards Big Bear) to 247 Fwy. (stop sign), go East; at Camp Rock Road, go North; at Rabbit Springs Road, go East (dirt road); The Buttes will be to the North.

